

MASTER'S PROGRAMMES IN ENGLISH IN LILLE, FRANCE

STUDY AT THE EUROPEAN
SCHOOL OF POLITICAL AND
SOCIAL SCIENCES

2022-2023





Welcome to ESPOL, the European School of Political and Social Sciences.

Located in Lille, France, ESPOL offers a range of advanced interdisciplinary master's programmes in political and social sciences, taught in English. Our study programmes are designed to help you understand and create solutions for some of today's most pressing global challenges. A stone's throw away from the European political hotspots, Brussels, London and Paris, and part of Lille Catholic University, France's biggest private university, ESPOL attracts an intellectually vibrant community of European and international students.

Whether you are interested in European affairs, in food studies or in security studies, our programmes are organised around interactive courses in small groups, bridging theory and practice, and emphasising policy and decision-making from the local to the global level. Our career development modules, intensive language training, and compulsory professional internships pave the way for successful future academic and professional careers.

Our students are supervised by an experienced multilingual team of professors, who worked and have been trained at the world's best universities. They work in close partnership with scholars, policy-makers, and practitioners from leading international organisations, universities and companies across the world, who regularly intervene as external speakers and invited lecturers in our courses.

At ESPOL we are committed to providing world-leading education, based on the latest developments in the political and social sciences. We train the political and societal actors of tomorrow's global transformations.

We look forward to welcoming you!



A dynamic region

The northernmost region of France, the Hauts-de-France is a dynamic region with a strong will to develop relationships with other countries. With excellent communications and an extensive network of businesses and industries, the area has proven its strategic position in Europe throughout the centuries. So too has Lille, its capital.

/2h30 from Amsterdam

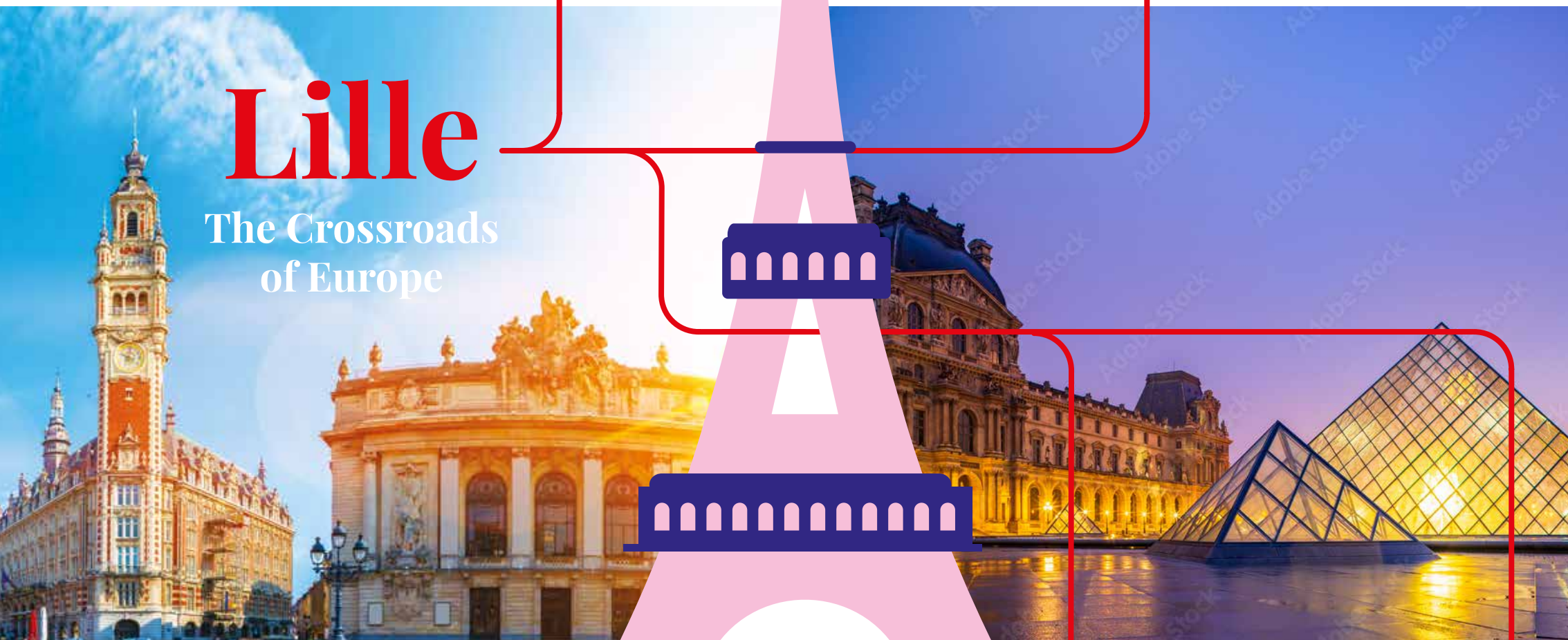


/45m from Brussels



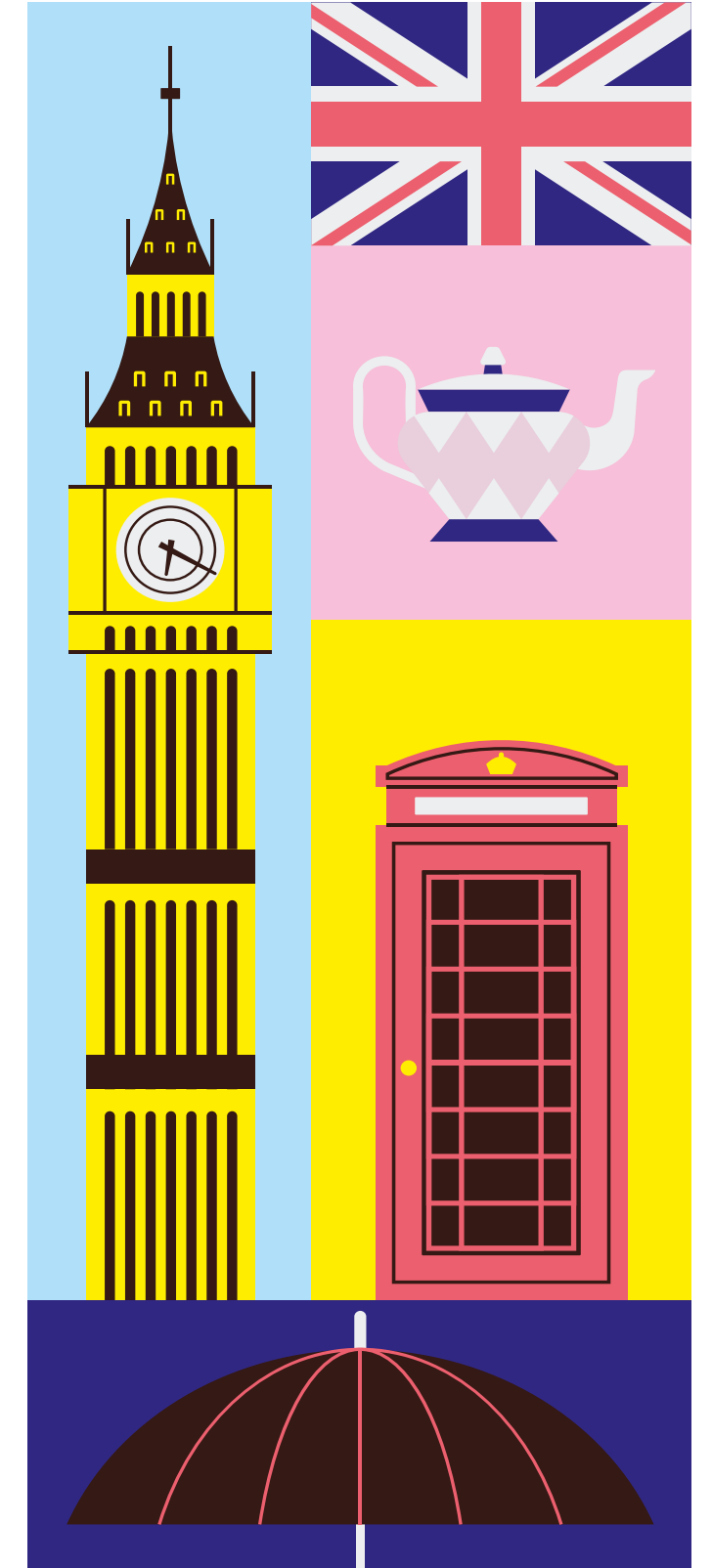
Lille

The Crossroads
of Europe



/1h from Paris

/1h30 from London





The Catholic University of Lille



MORE THAN
30,000
STUDENTS



5
FACULTIES
5
SCHOOLS



9
RESEARCH
CENTERS



200
UNDERGRADUATE
AND MASTER'S
PROGRAMMES



169
PARTNER
UNIVERSITIES



100
STUDENT
SOCIETIES

Master's in Global and European Politics

Europe and the EU in a changing world

The multidisciplinary master's programme in Global and European Politics is an advanced postgraduate degree focusing on the political, social and philosophical dimensions underpinning the European Union, its governance, its place and role in world politics. In Europe, the supranational level is the stage at which some major political challenges play out: migrations and borders, environmental degradation and climate change, the reconfiguration of democracy and sovereignty, global inequalities or poverty among others.

Understanding these challenges and the ways in which they are to be addressed involves analysing the multi-level interaction between public actors (Member States, EU institutions, etc.) and private actors (companies, networks, NGOs, etc.) in Europe. These interactions are places of constant struggle for the redefinition of the rules of the game of both European and world politics.

This programme provides students with a thorough knowledge of the formal and informal rules of European affairs and of the conflicts that shape them. Students will acquire the necessary know-how and the conceptual tools to understand, analyse and act upon European politics. Drawing on the latest developments in EU studies, Public Policy, Economic Governance, and European History, among others, as well as in-depth methodological training, career development, and intensive language modules, the study programme will allow students to develop innovative policies for public and private sector in Europe, at local, national, and European level. This degree is designed for future professionals in European affairs.



Consult
our course
catalogue



A state-certified
Master's Degree

Master's in Food Politics and Sustainable Development

The politics of eating and producing food

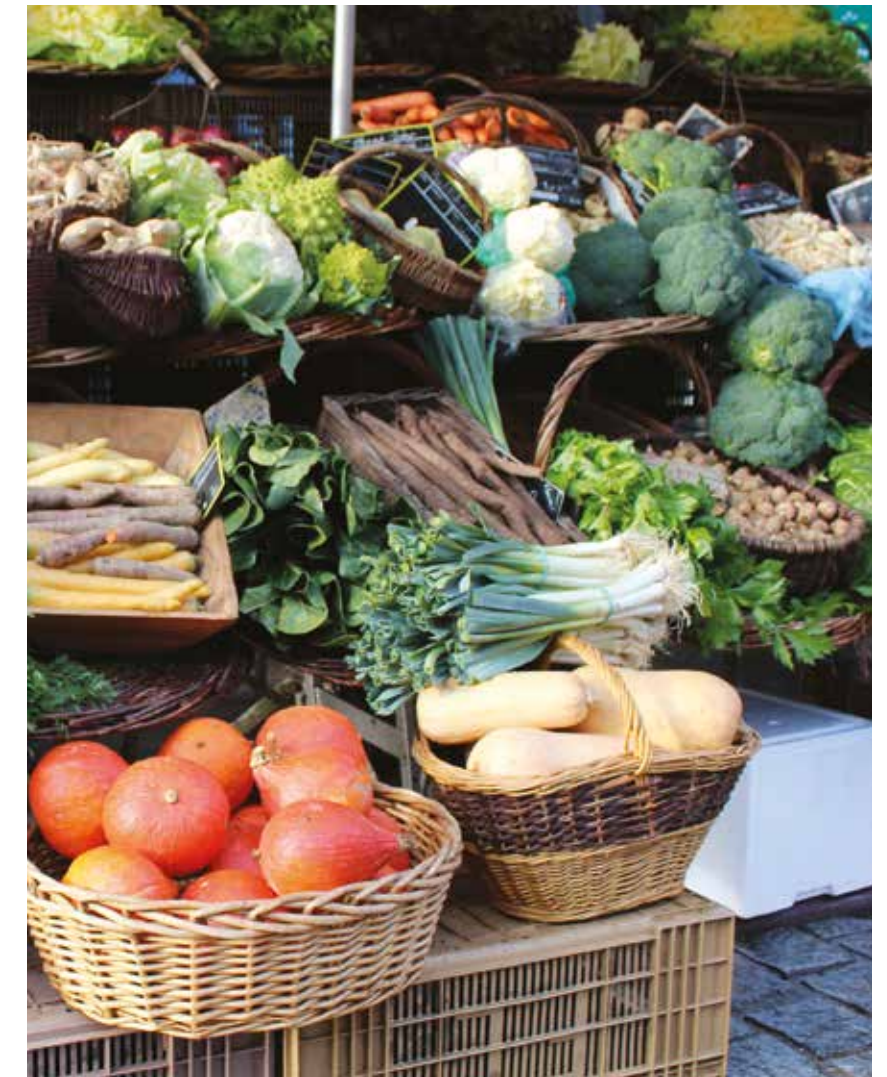
Food and agriculture are fields in which major global challenges arise. While the global food system is providing more food than ever before in human history, hunger and famine continue to plague the Global South. Conversely, obesity and malnutrition are emerging in various regions, especially Western industrial societies and emerging countries. In 2050, the world's population is projected to rise to 10 billion people; and they all need to eat. The various ecological and social problems of the today's food system represent additional challenges.

Questions related to the organisation and regulation of our agri-food system are complex and include the production, distribution, accessibility, and consumption of food, as well as issues related to poverty, public health, animal welfare, science and technology, and trade. What would a sustainable food system look like, and how can it be achieved?

The master's programme in Food Politics and Sustainable Development examines the ways in which public authorities (regional bodies, nation states, European institutions, UN agencies) and private actors (individuals, farming communities and organisations, transnational businesses, NGOs, etc.) shape and transform the agri-food system. While the production of food is initiated at local level, its distribution and consumption often have global implications. Understanding, analysing and acting upon these implications is key to sustainably govern and transform our food system in the future.

Because these questions require to cross political and technical knowledge, the master's programme in Food Politics and Sustainable Development is organised in close collaboration with practitioners. It includes a partnership with ISA Lille, the renowned agronomy institute of Lille Catholic University; numerous interventions from agri-food professionals; and field trips to regional farms, food-related policy events, key food fairs such as the Paris International Agricultural Show, and food markets such as the Rungis Market, the biggest wholesale food market in the world.

This programme will enable students to acquire the knowledge and skills needed to master and design complex and innovative food policy solutions, and to occupy key professional positions in public and private organisations.



Consult
our course
catalogue



A state-certified
Master's Degree

Master's in International and Security Politics

*The politics of violence
and uncertainty*

In addition to being an absolute priority for governments across the world, security has colonized our language as much as our everyday lives. Not a day goes by without politicians and media outlets mentioning yet another 'security issue'. The master's programme in International and Security Politics asks what this tells us about our contemporary world, and whether our world has really become more dangerous and uncertain than before.

At the intersection of international relations studies, security and defence studies, political theory, sociology and history, this programme provides a deep understanding of how security and international security transform both conceptually and practically in an increasingly interconnected and rapidly changing world. It does so by analysing the role of different actors in shaping and addressing security issues which develop beyond the single framework of action of States. The programme also seeks to provide students with the necessary skills and conceptual tools for analysing critically and addressing the social-political mechanisms driving security related issues (from transnational armed conflicts and violence to environmental and IT security), and the growing uncertainty attached to them.

This programme in International and Security Politics will enable students to acquire the knowledge and skills needed to diagnose security problems and design appropriate security policy solutions, and to occupy key professional positions in national administrations as well as international and non-governmental organizations. Students will not only benefit from the academic environment of the School, but also from the practical knowledge of security practitioners and experts within various seminars such as a joint seminar with the French Army Command (based in Lille) and the research seminars co-organized with the Collaborative Observatory on Terrorism, Antiterrorism and Violence (OCTAV).



Consult
our course
catalogue



A state-certified
Master's Degree

ESPOL Highlights

ESPOL STUDY TRIPS: EXPERIENCE THE REGULATION AND CONSEQUENCES OF GLOBAL POLITICS YOURSELF

Several field courses will be organized during your stay at ESPOL. During the first year, a 3-4 day trip will take you to Geneva, Switzerland, where you will have the opportunity to meet policy-makers from many agencies of the United Nations and international NGOs. In the second year, we will take you to the heart of European policy-making: Brussels, Belgium, where we will be visiting different European institutions. Finally, students in the Food Politics will benefit from additional study trips, including Rungis International Market, the largest wholesale market in the world, the Paris International Agricultural Show, as well as farm visits and local food initiatives.

LEARNING FROM THE BEST: ESPOL-LAB CONFERENCES AND SEMINARS

ESPOL does not only provide students with courses, but also with an exciting intellectual life: your professors are also researchers whose work benefit students. Conferences and seminars organized by ESPOL-LAB, the research lab at ESPOL, are available to our master's students. For a glimpse into our research activities, have a look at the research section on our website: <https://espol-lille.eu/research/>

BEYOND THE CLASSROOM: PROFESSIONAL TRAINING COURSES AND INTERNSHIPS

Courses at ESPOL take you beyond the classroom by providing practical tools necessary for a rapid insertion into the professional world (career development modules, management, media training, etc.). Committed to supporting its students finding their way after graduation, the ESPOL master's programmes are designed to help students get the best skills and career options. Different workshops and meetings with professionals are organized.

The masters' last semester (2nd Year) involves a 3 month-long internship. As interns, ESPOL Master's students held different positions, such as a project officer at the EU Delegation to the United Nations and others International Organizations in Geneva in the Migration-Humanitarian affairs, campaign manager with Foodwatch France, international development officer at the French Union for Renewable Energy, or as a project assistant for the United Nations Convention to Combat Desertification among others. You may find all the details about internships on our website: www.espol-lille.eu/en/career/

EVERYDAY LIFE MATTERS TOO: ESPOL'S VIBRANT INTERNATIONAL COMMUNITY

ESPOL bachelor and master's students are happy to welcome many international students every year, either in exchange or enrolled in our various programmes. ESPOL students are also eager to organize themselves and participate in the life of the community: different associations (sport, entertainment, politics, environment, etc) will help students fill their days, should they need to!

A COMMITMENT TOWARDS THE ENVIRONMENT: A "ZERO PAPER" EXPERIMENT

The ESPOL Master's programmes have been selected to take part in a «zero-paper» experiment. Lille Catholic University will gradually reduce waste of used paper and encourage the use of electronic devices and cloud sharing practices.



The multidisciplinary and multilingual dimension of this degree reinforced my foreign language skills while providing me with conceptual and theoretical tools that have sharpened my ability to understand contemporary international issues and enable me to conduct in-depth analysis. On the strength of these skills, I joined the UNDSS (UN) office in Panama, where I am doing a training course as a junior analyst on the Latin America and Caribbean zone. After my under graduate education and working professionally I decided that the next logical step in my career would be to study in a world class institution such as ESPOL that offers not only diverse international perspectives but also provides a highly respected education.

MARTIN BRUN,
ALUMNI Master in international
security policy

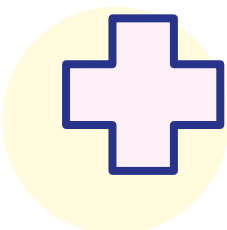
Your university life



FINANCIAL AID

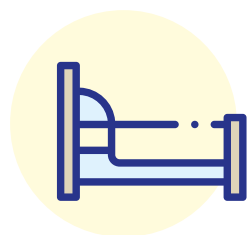
Master's students can apply for a scholarship once they are accepted to join ESPOL. For more information please contact: espol@univ-catholille.fr

+33 (0)3 20 13 40 80



HEALTHCARE

The University clinic, the Centre Polyvalent de Santé Universitaire (CPSU), is open all week and provides consultations in general practice and gynaecology, nursing care, sophrology workshops and psychological counselling.



ACCOMMODATION

The university's accommodation service, the Association d'Entraide Universitaire (AEU), gives students access to a range of 21 university residences, with over 1,200 rooms (prices ranging from €205 to €420 per month).

For more information:
All la Catho-Accommodation
department
47 bd Vauban-59000 Lille

03.20.15.97.70
www.all-lacatho.fr/en/
www.aeu.asso.fr



SPORT

A gymnasium is reserved for students of the Lille Catholic University or associated schools. It is open 6 days a week, programming various group activities as well as providing free access to the gym and its equipment.



AN ADMINISTRATION AT YOUR DISPOSAL

A team of 8 people is on hand to help you to get your new student life off to a good start; it will remain by your side throughout your studies at ESPOL



TUITION FEES

Tuition fees at ESPOL vary according to the following criteria: household income; household composition; and a needs-based evaluation index.

Tuition fees for the Master's programmes range from €3,140 to €9,620.

You can get an estimate of your tuition fees on the following website:

[https:// simulationscolarite.univ-catholille.fr](https://simulationscolarite.univ-catholille.fr)



CATERING

A university restaurant is open for lunch and dinner in the heart of the campus. It offers a variety of healthy menus at affordable prices



Admission and contact

HOW TO APPLY?

1. Choose your preferred master's programme
2. Review the eligibility and admission criteria
3. Take a language test (or provide results from a recent test; see below)
4. Ask 2 former professors for reference letters, make sure to do this early enough to ensure your referees have enough time to reply
5. Create your account and submit your application through the admission platform:
<https://espaceadmission.univ-catholille.fr/>
6. Upload the required documents onto the admission platform
7. When accepted, complete your registration on
<https://espaceadmission.univ-catholille.fr/>

WHEN TO APPLY?

**To apply, we invite you to
register your application
on our admission area:
between 15 February and
1st May 2022.**

WHAT TO SUBMIT?

To be eligible for admission, students are required to submit:

- an undergraduate level degree (180 ECTS or equivalent) at the time of entry to ESPOL. In principle, the ESPOL masters are open to all disciplinary backgrounds but previous courses in political sciences will be appreciated. Additional classes can be imposed for students without political science background.
 - A Master level degree for countries in which universities do not award undergraduate qualifications;
- A personal statement in English. Personal statements explain your interest in the study programme and its aims.
- A CV in English.
- Official transcripts from all undergraduate and graduate institutions previously attended (including exchange programmes).;
- Proof of English language proficiency through one of the following completed tests (proof of registration for a test is not enough):
 - TOEFL – 80 iBT or 550 PBT or 60 PDF
 - IELTS Academic – 6.0
 - PTE Academic – 54
 - Cambridge Certificate in Advanced English (CAE) or Cambridge Certificate of Proficiency in English (CPE) – grade C
 - TOEIC – 785
 - A language test is not required for native English speakers or students with a undergraduate/graduate degree in English.
- Two academic references, in English or French



Do you have questions or
do you need more information?
Please contact :

Oliwia BARAN

**oliwia.baran@univ-catholille.fr
+33 3 59 56 79 76**

Please visit

www.espol-lille.fr/en/

for more information on the
admission procedure



ESPOL
60 BOULEVARD VAUBAN
CS 40109
59016 LILLE CEDEX
T. 03 59 56 79 56
ESPOL@UNIV-CATHOLILLE.FR



ESPOL-LILLE.EU